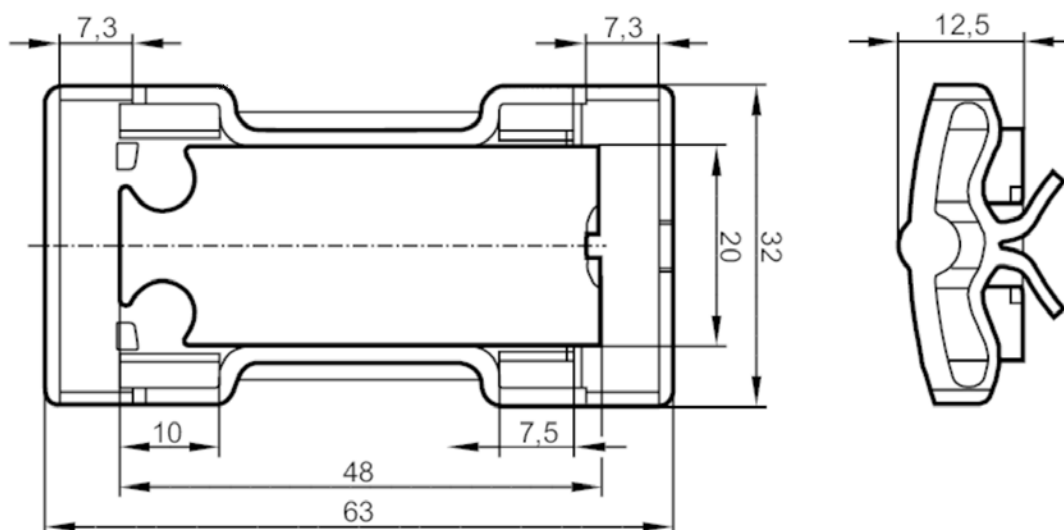


E12163



Mounting adapter for mounting to pipes

MOUNTING ADAPTER KQ



Application

Design	fixing of types KQ5 and KQ6 to pipes and tubes, pipe and tube installation KQ5 / KQ6 with cable ties
--------	---

Operating conditions

Ambient temperature	[°C]	-25...80
---------------------	------	----------

Mechanical data

Weight	[g]	6.6
Dimensions	[mm]	32 x 12.5 x 63
Materials		Mounting adapters: PA 12 black

Remarks

Pack quantity	1 pcs.
---------------	--------