

Rittal – The System.

Faster – better – everywhere.

► Lock Insert - 2460000

Date : Jul 06 , 2020

ENCLOSURES

POWER DISTRIBUTION

CLIMATE CONTROL

IT INFRASTRUCTURE

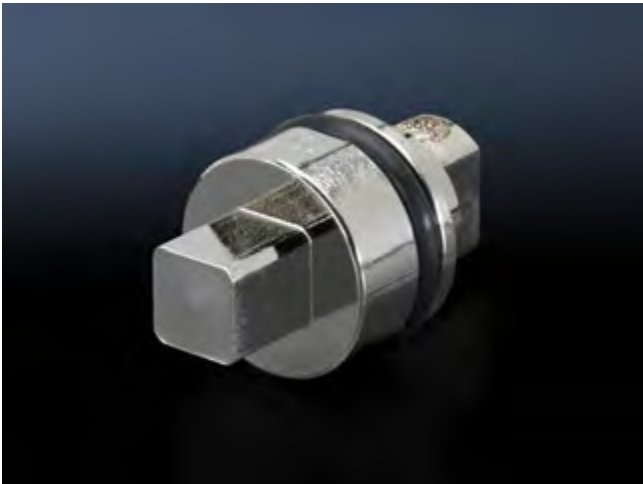
SOFTWARE & SERVICES

FRIEDHELM LOH GROUP



Web: <https://www.bolenscontrol.com/> - Phone: (800) 658-5241 - Email: sales@bolenscontrol.com

Lock Insert - 2460000



Product Description	
Version	A
Material	Die-cast zinc
Enclosure type	TP pedestals AE with 3-point lock AE with 3-point lock stainless steel AE with cam Basic AE with 3-point lock Basic AE with 3-point lock stainless steel Basic AE with cam BG with cam EB One-piece console TP console cover One-piece console TP console door PC enclosure for keyboard drawer or fold-out tray TP desk unit and top piece TP universal console Wall-mounted housing AE with 3-point lock Wall-mounted housing AE with cam EL 3-part 6 – 15 U
Dimensions	27 mm (1.1 ")
Installation in handle system	Adjacent door latch Ergoform-S handle Standard Ergoform-S handle Standard for KS plastic enclosures
Lock Insert	7 mm square
Packaging unit	1 pc(s).

Weight/packaging unit	0.02 kg (0 lb.)
EAN	4028177023765
Customs tariff number	83015000
ETIM 6.0	EC000743
ETIM 5.0	EC000743
eCl@ss 8.0/8.1	27409218
eCl@ss 7.0/7.1	27409218
eCl@ss 6.0/6.1	27409218
eCl@ss 5.1/5.1.4	27189256
Product description (long)	SZ Lock insert version A Die-cast zinc 7 mm square L: 27 mm