

# Rittal – The System.

Faster – better – everywhere.

## ► Flex-Block trim panels, 100 mm, sealed for Flex- Block corner pieces - 8100010

Date : Mar 19 , 2020

ENCLOSURES

POWER DISTRIBUTION

CLIMATE CONTROL

IT INFRASTRUCTURE

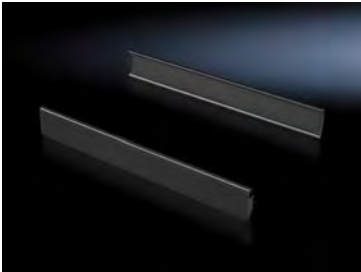
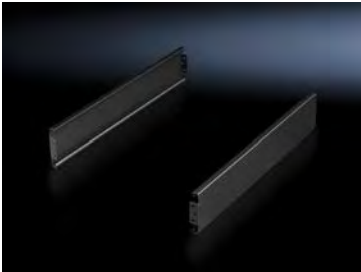
SOFTWARE & SERVICES

FRIEDHELM LOH GROUP



Web: <https://www.bolenscontrol.com/> - Phone: (800) 658-5241 - Email: [sales@bolenscontrol.com](mailto:sales@bolenscontrol.com)

# Flex-Block trim panels, 100 mm, sealed for Flex-Block corner pieces - 8100010



Product Description	
Description	For tool-free assembly. With symmetrical enclosure dimensions trim panels have identical width and depth.
Material	Carbon steel
Color	RAL9005
Supply includes	2 trim panels
Suitable for	1000 mm (39 ")
Dimensions	100 mm (3.9 ")
Packaging unit	2 pc(s).
Weight/packaging unit	2.64 kg (5.8 lb.)
EAN	4028177692459
Customs tariff number	94032080
Product description (long)	TS Flex-Block trim panel solid H: 100 mm for WD: 1000 mm