

3-phase busbars Modular spacing 55 mm for 2 switches and accessories Fork shape connections



General technical data

protection class IP on the front acc. to IEC 60529		IP20
touch protection on the front acc. to IEC 60529		finger-safe, for vertical contact from the front

Installation/ mounting/ dimensions

operational current rated value	A	63
number of poles for main current circuit		3
type of electrical connection for main current circuit		screw-type terminals

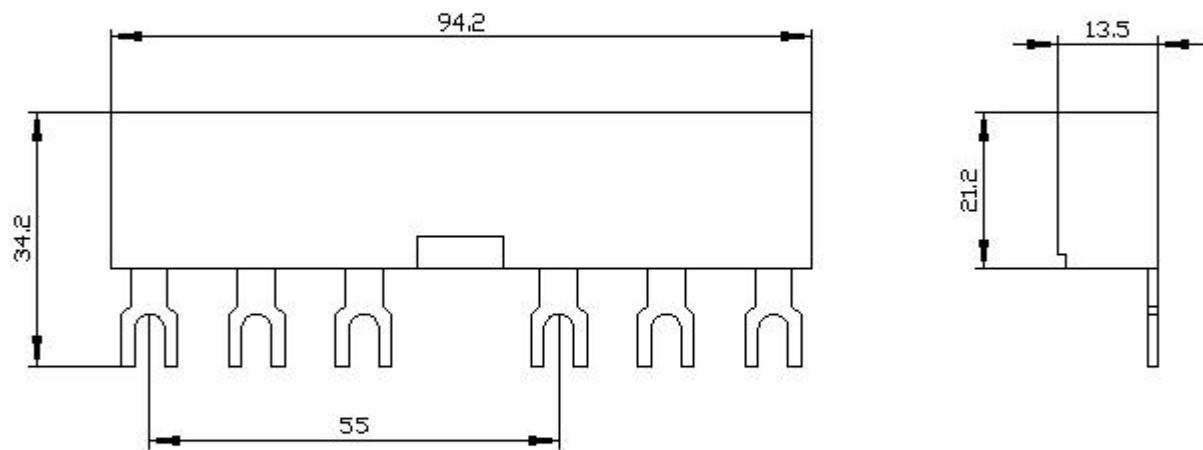
Certificates/ approvals

General Product Approval	Declaration of Conformity	Test Certificates
		
		
		

Test Certificates	Marine / Shipping	other
-------------------	-------------------	-------

				
---	---	---	---	---

Further information



last modified:

12/15/2020 