

3-phase supply terminal Size S2 for 3-phase busbar connection from top



General technical data		
product brand name		SIRIUS
product designation		Three-phase feeder terminal
design of the product		from above, size S2
size of the circuit-breaker		S2
protection class IP on the front acc. to IEC 60529		IP20
touch protection on the front acc. to IEC 60529		finger-safe, for vertical contact from the front
insulation voltage with degree of pollution 3 at AC rated value	V	690
ambient temperature		
• during storage	°C	-50 ... +80
• during operation	°C	-20 ... +60
ampacity maximum	A	105
Installation/ mounting/ dimensions		
width	mm	54.5
height	mm	50.8
depth	mm	76.5
Connections/ Terminals		
type of electrical connection for main current circuit		screw-type terminals
type of connectable conductor cross-sections		
• for main contacts		
— solid		2x (2.5 ... 50 mm²), 1x (2.5 ... 70 mm²)
— stranded		2x (2.5 ... 50 mm²), 1x (2.5 ... 70 mm²)
— finely stranded		
— with core end processing		2x (2.5 ... 35 mm²), 1x (2.5 ... 50 mm²).
• at AWG cables for main contacts		2x (10 ... 1/0), 1x (10 ... 2/0)
Certificates/ approvals		
certificate of suitability		CE / UL / CSA / CCC
General Product Approval		Declaration of Conformity
		Test Certificates



Miscellaneous

[Special Test Certificate](#)

Test Certificates	Shipping Approval
-------------------	-------------------

Type Test  
Certificates/Test  
Report



Shipping Ap-  
proval

other

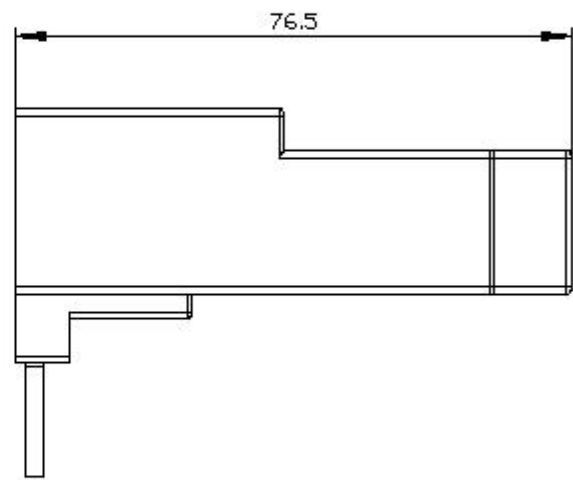
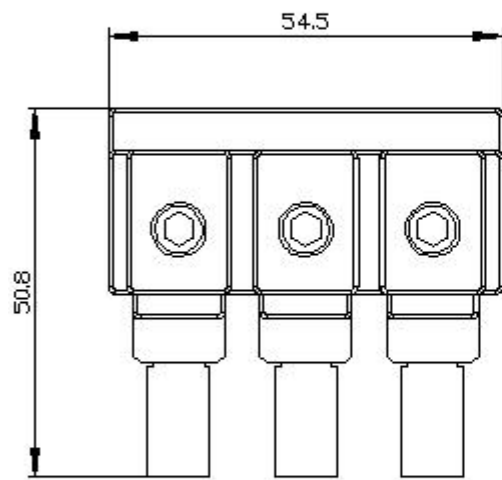
Railway



Confirmation

Vibration and Shock

Further information



last modified:

12/15/2020 